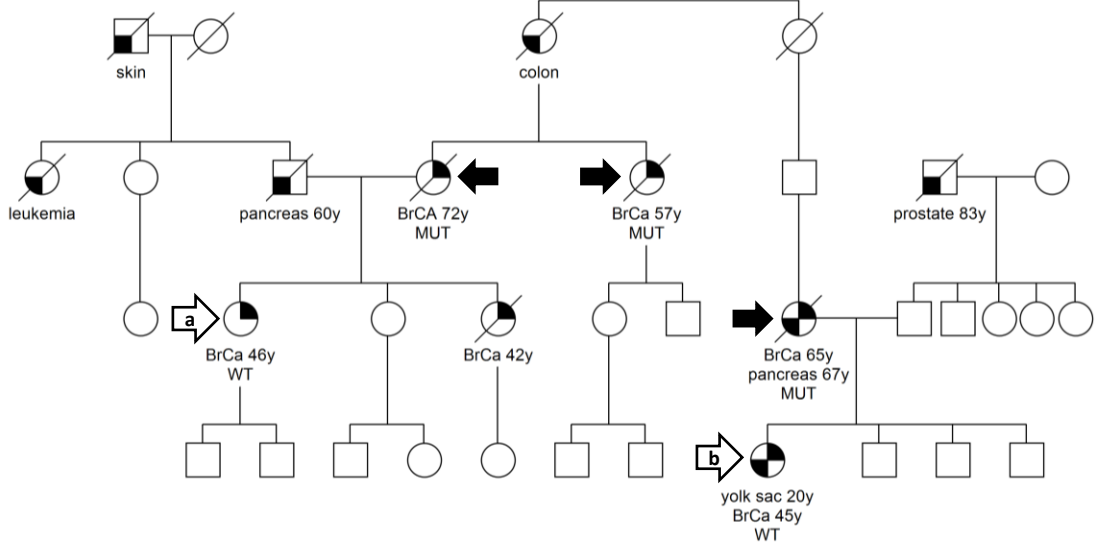
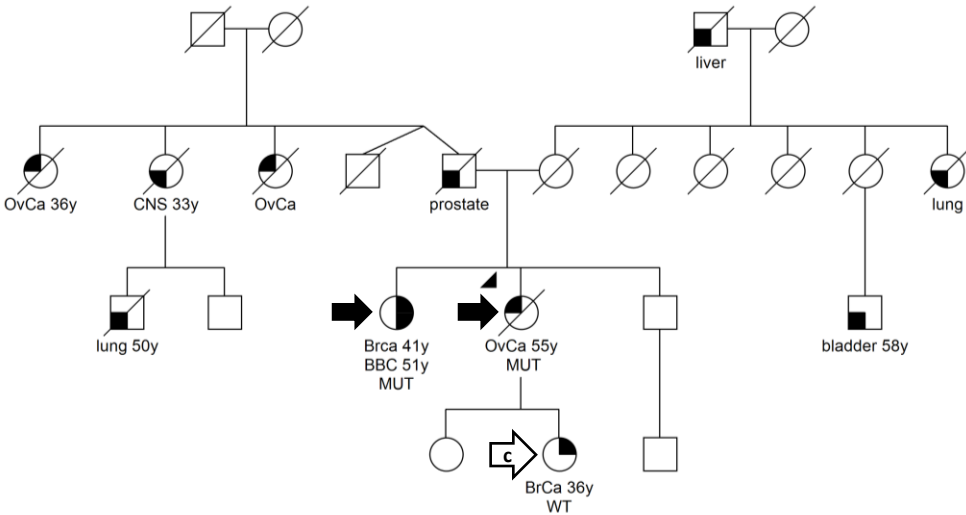


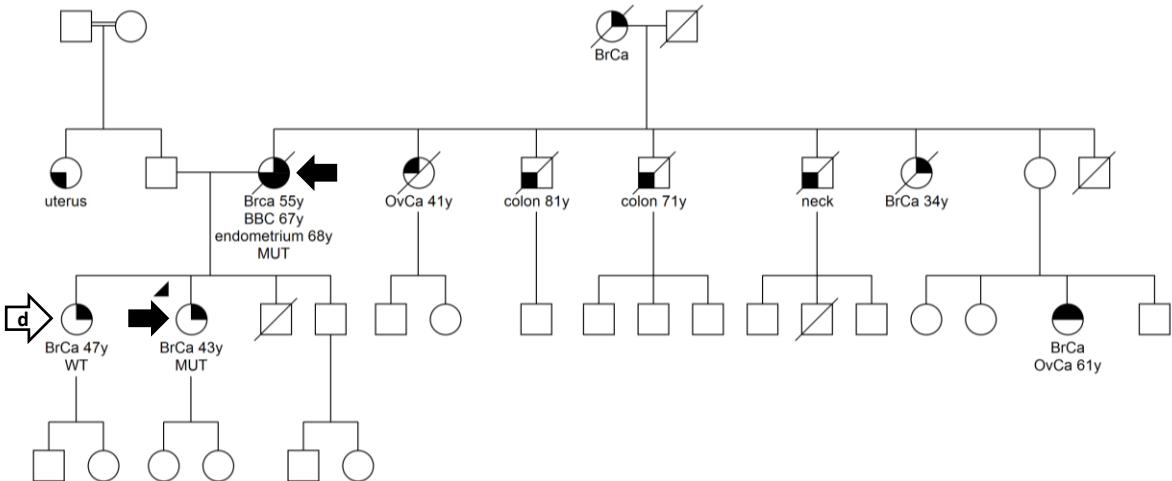
Family 1 *BRCA1* c.1380dupA (p.Phe461Ilefs\*19)



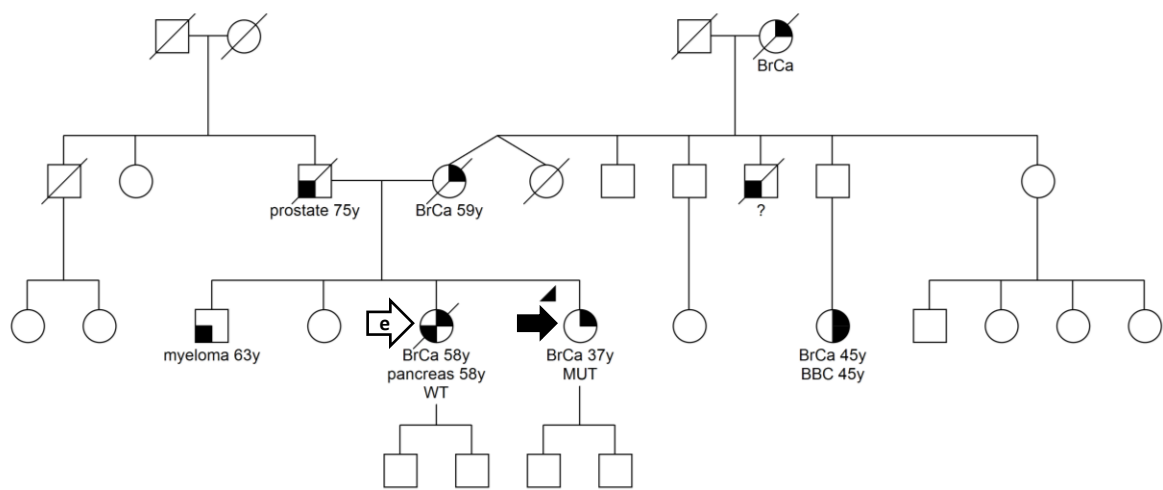
Family 2 *BRCA2* c.3109C>T (p.Gln1037\*)



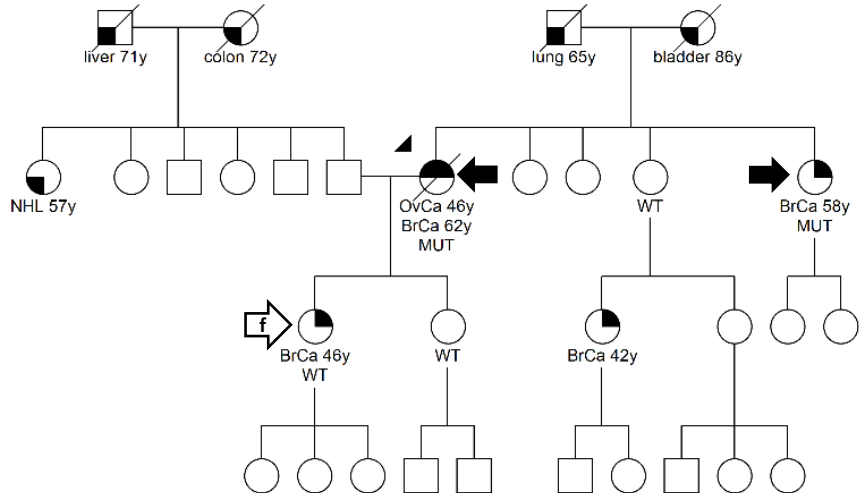
Family 3 *BRCA1* c.190T>C (p.Cys64Arg)



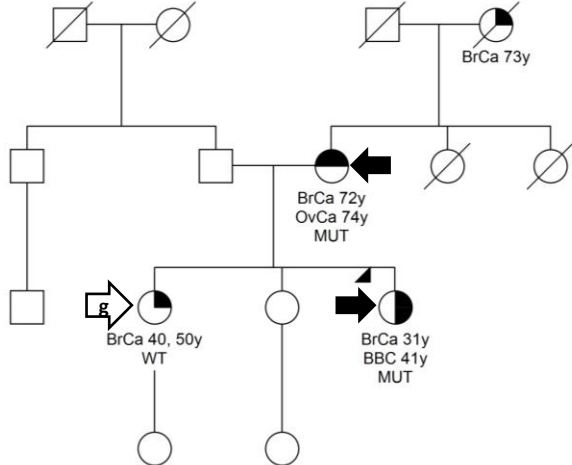
Family 4 *BRCA1* c.5266dupC (p.Gln1756Profs\*74)



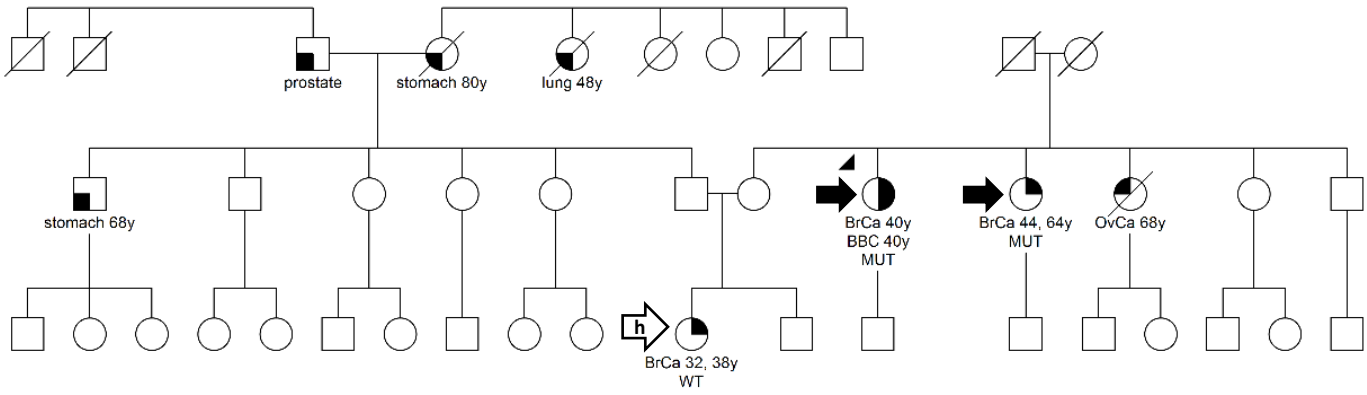
Family 5 *BRCA1* c.1088delA (p.Asn363Ilefs\*11)



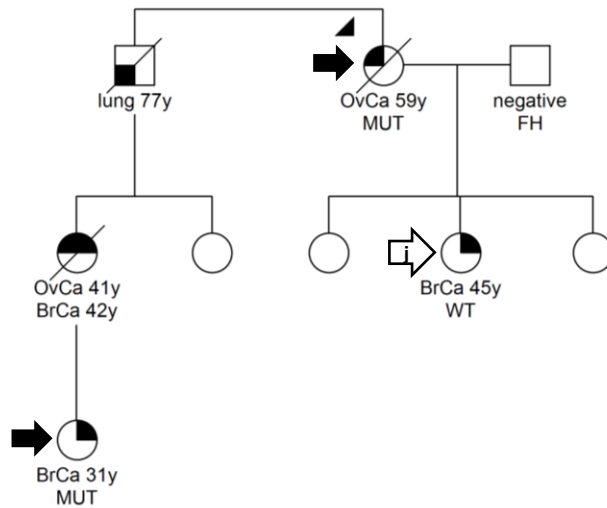
Family 6 *BRCA1* c.2157\_2160delAGAA (p.Lys719Asnfs\*16)



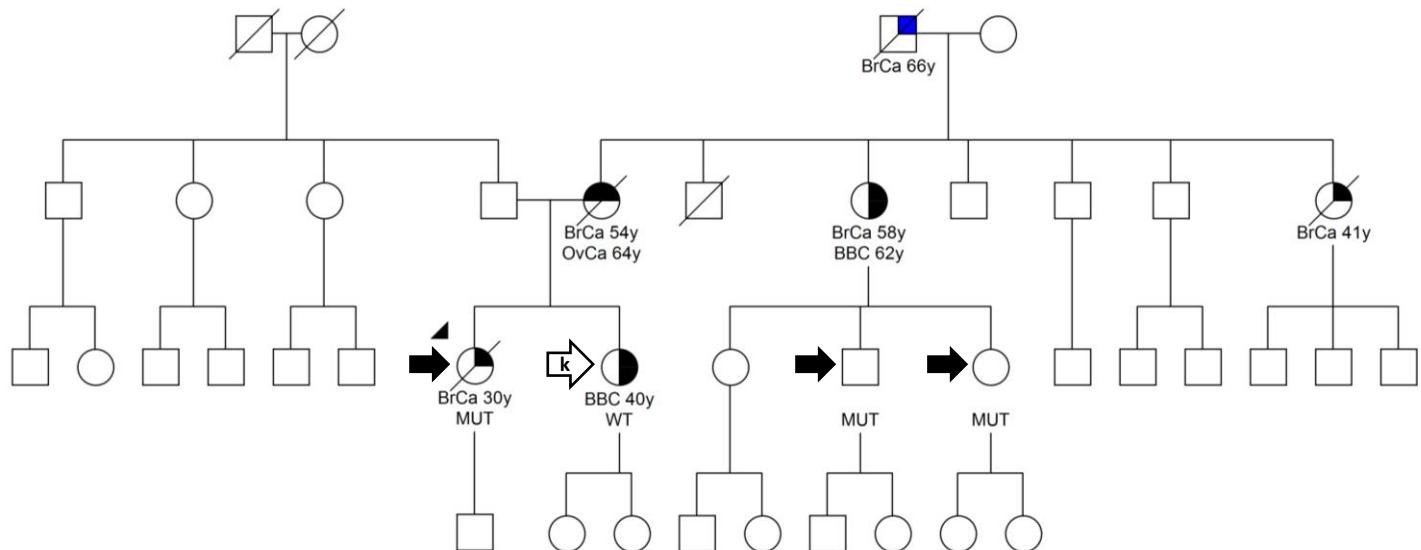
## Family 7 *BRCA1* c.190T>C (p.Cys64Arg)



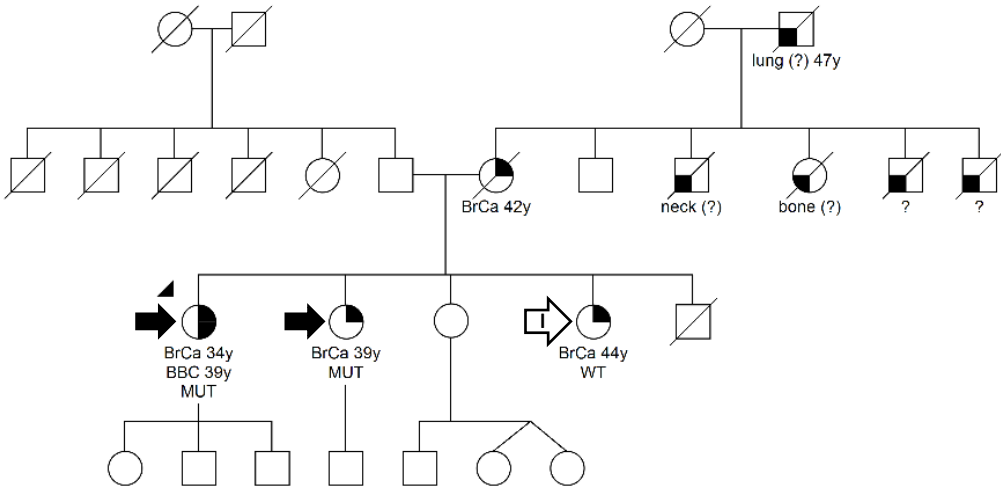
## Family 9



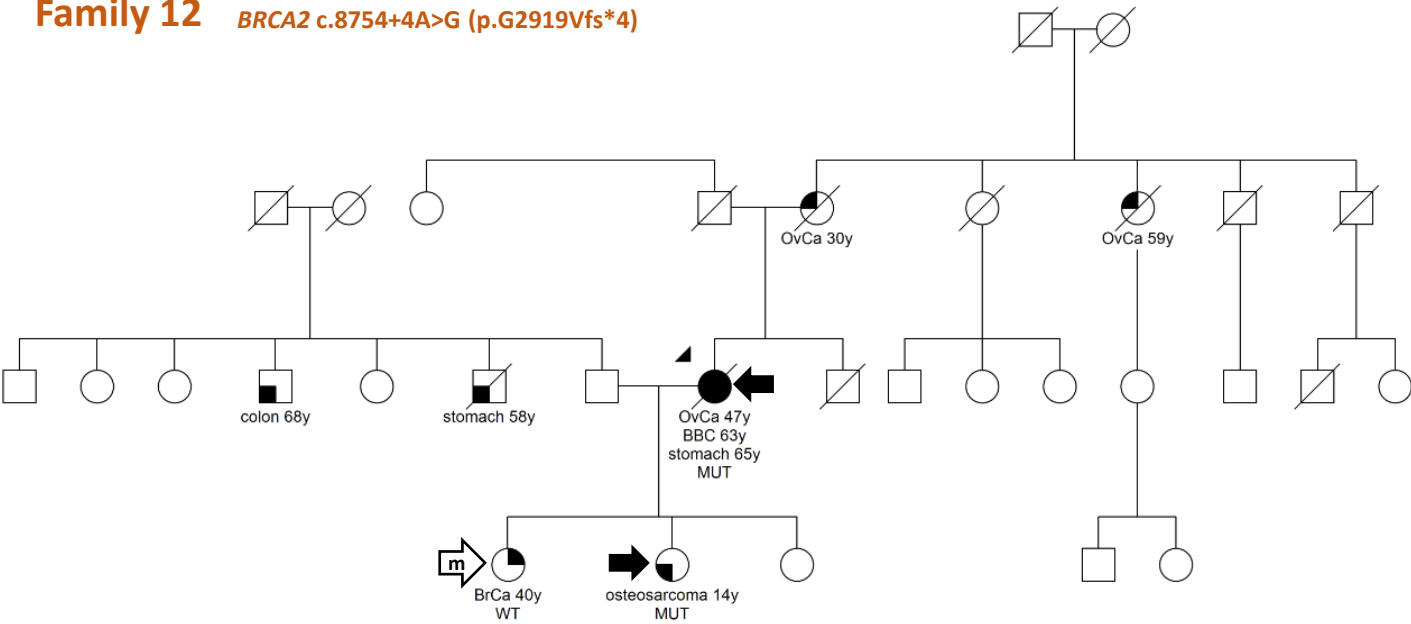
## Family 10 *BRCA2* c.8487+1G>A



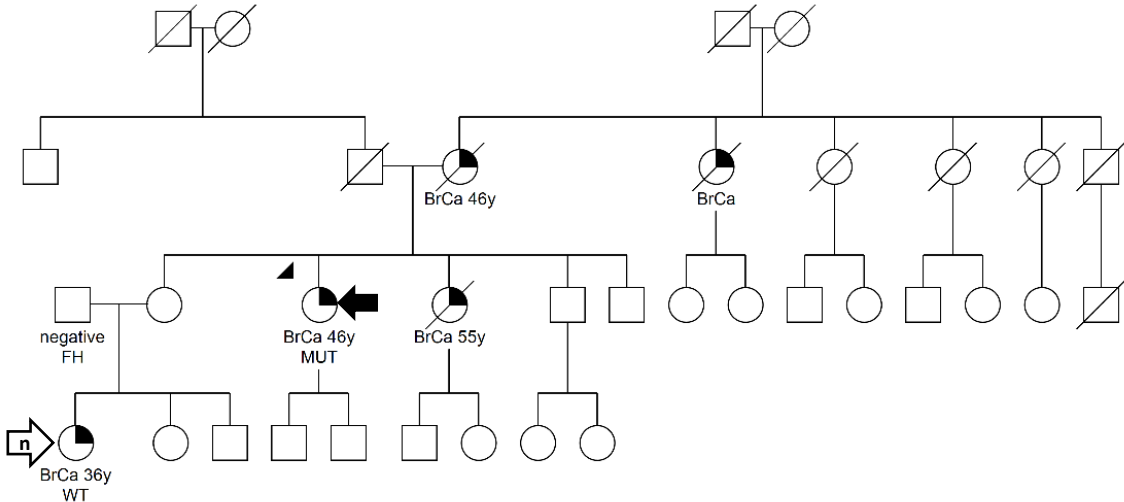
Family 11 *BRCA2* c.7806-2A>G



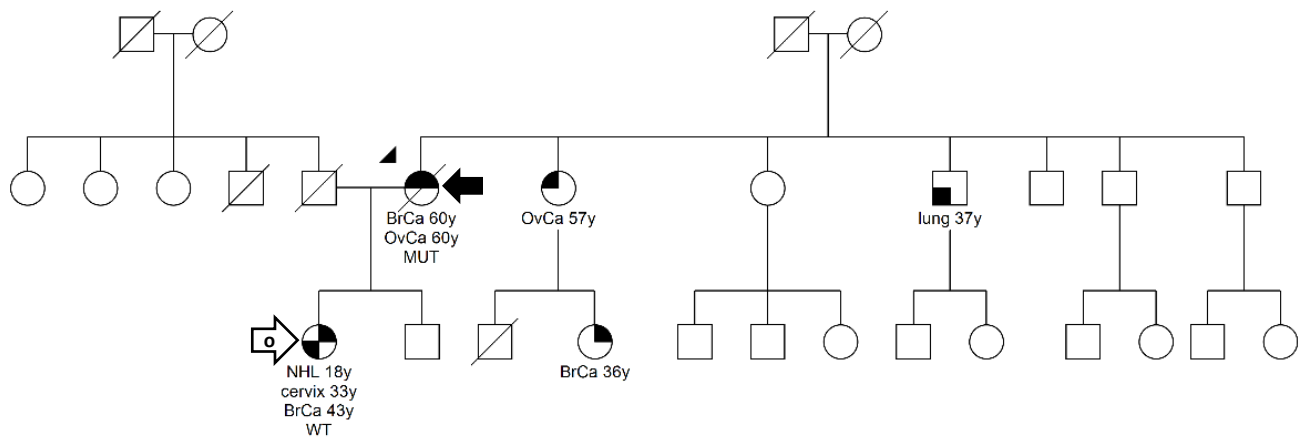
Family 12 *BRCA2* c.8754+4A>G (p.G2919Vfs\*4)



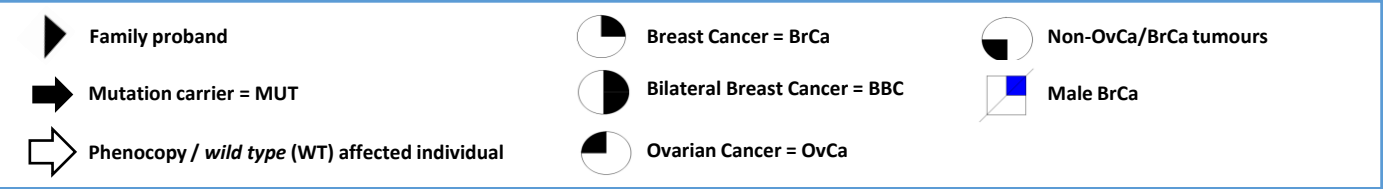
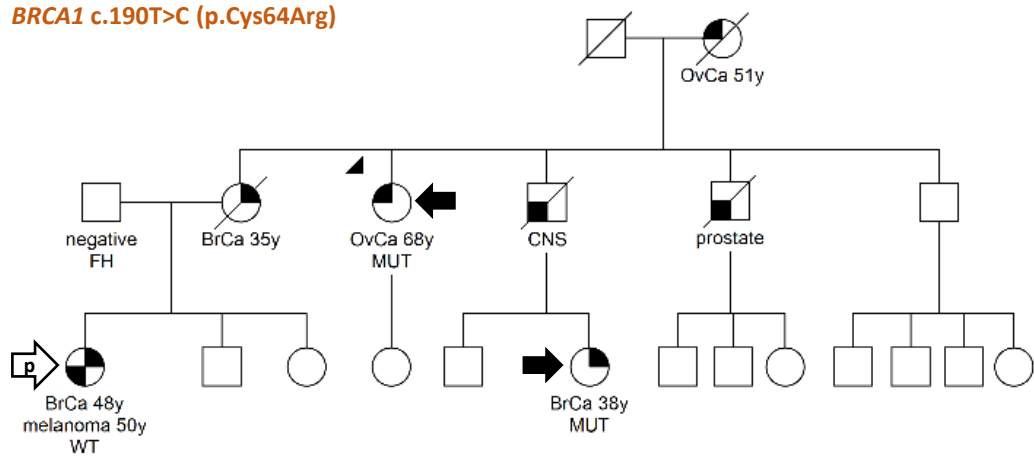
Family 13 *BRCA1* c.981\_982delAT (p.Cys328\*)



Family 14 *BRCA1* c.798\_799delTT (p.Ser267Lysfs\*19)



Family 15 *BRCA1* c.190T>C (p.Cys64Arg)



**Supplementary Figure 1.** Pedigrees of 14 families included in the study (family 8 is shown in Figure 2). Genetic analysis results (MUT, mutation carrier; WT, *wild-type*) are reported beneath tested individuals; neoplastic diseases and age at diagnosis in years (y) are reported beneath affected patients. NHL, non-Hodgkin lymphoma; CNS, central nervous system; ?, cancer type and age unknown or uncertain; FH, family history.