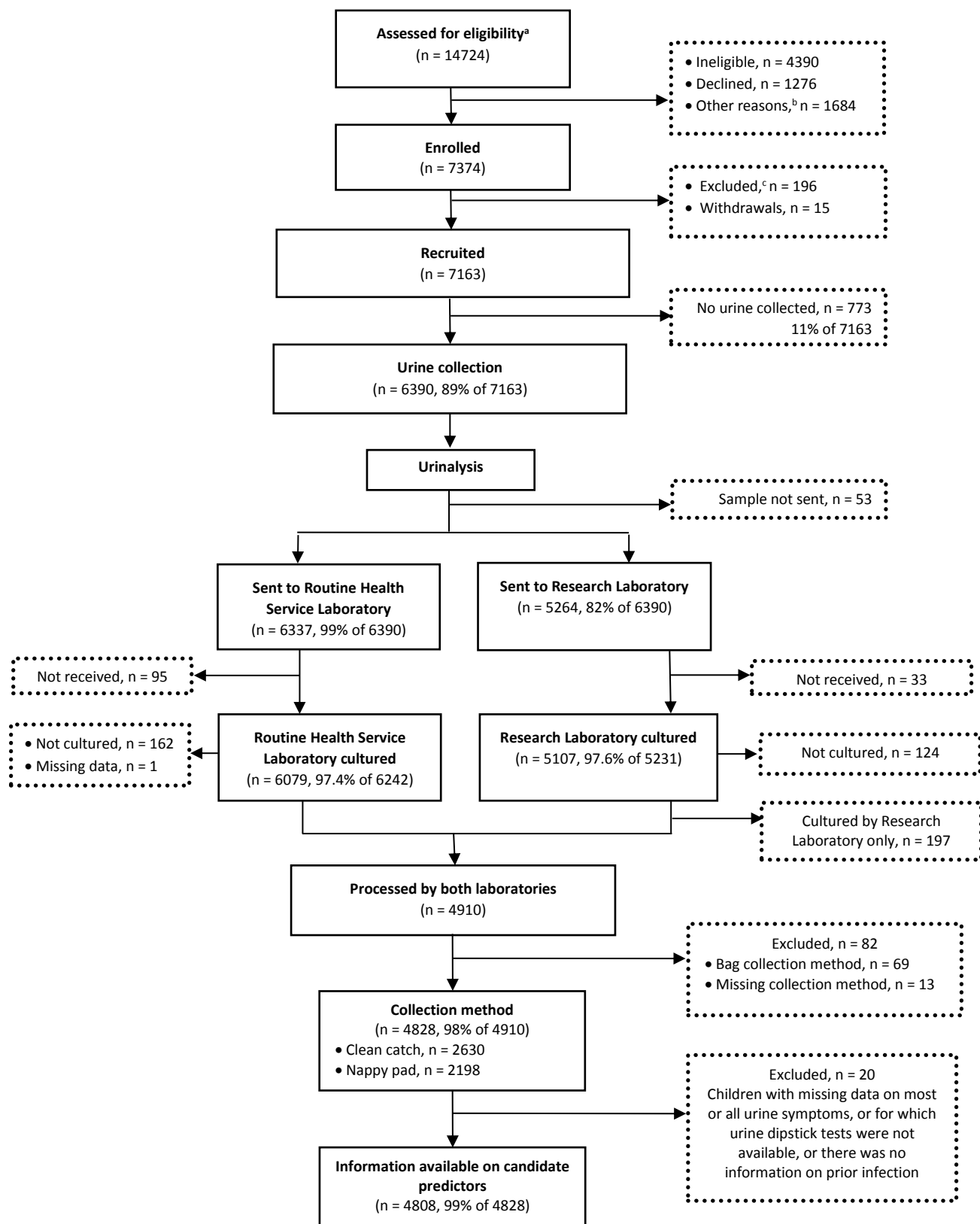


S1 Fig. DUTY study participant flow diagram



Notes: The original sample size plan was to recruit 6000 children, this was targeted at the DUTY study main objective, namely the development of the clinical algorithm. As this target was met early and the prevalence of UTI was lower than expected, we obtained ethical approval to continue recruiting until April 2012 even though this exceeded the original projected study requirement. Note a, 14,724 children were assessed for eligibility according to completed screening logs. However, this figure is an underestimation of the total number of children assessed, as not all sites completed screening logs and some were incomplete; Note b, other reasons include left prior to invitation, no consent or there was a language barrier; Note c, includes n = 44 retrospectively ineligible due to GP referral, n = 55 data quality issues and n = 97 cases removed during data cleaning.