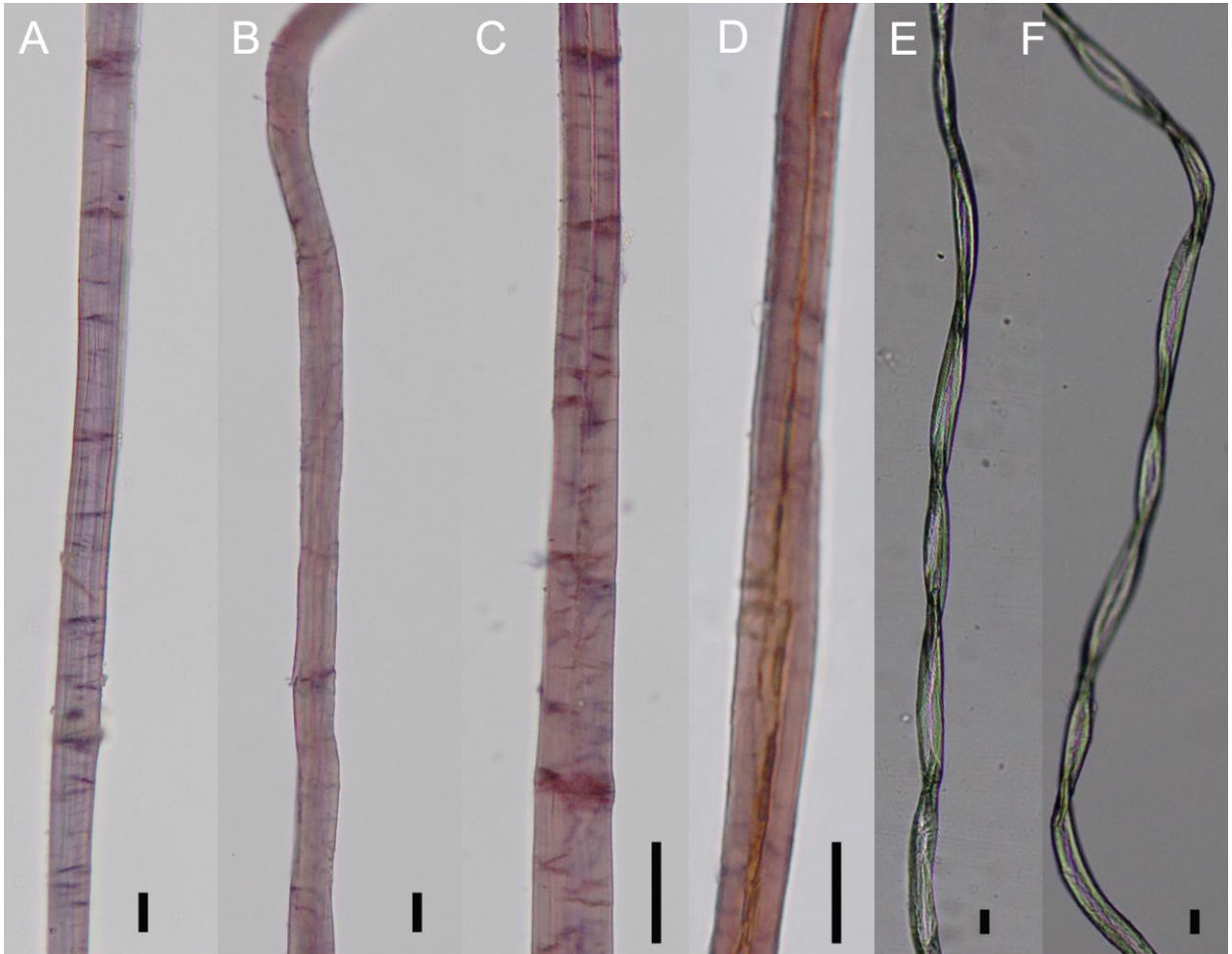


Supplementary Figure 5S
Microscopic analysis of fibers from wicks of Astana oil lamps



Microscopic structure of wick fibers in Astana lamps and corresponding references.

(A) Modern hemp blast fiber (*Cannabis indica* Lam.) and (B) hemp fiber from wick 1# (as well as 2# and 7#; data not shown) showed rough surface with cross-markings, longitudinal striations and rotated *counterclockwise* in the drying-twist tests.

(C) Modern ramie blast fiber (*Boehmeria nivea* L.) and (D) ramie fiber from wick 2# (as well as 7# and 8#; data not shown) have longitudinal striations on their surface, but rotated *clockwise* in the drying-twist tests.

(E) Modern cotton blast fiber and (F) cotton fiber from wick 8# (and also 1#; data not shown) are flat and crimping without transverse stripes.