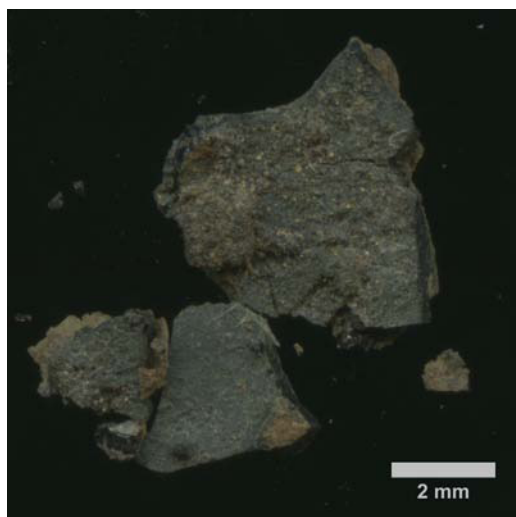


Supplementary Figure 2S . Light microscopy of deposits from Astana lamps

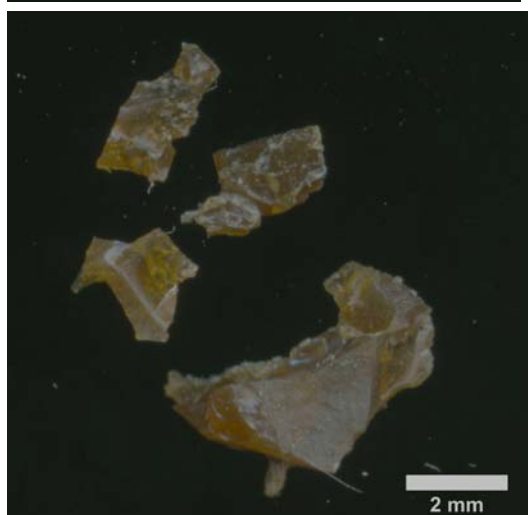
1#a



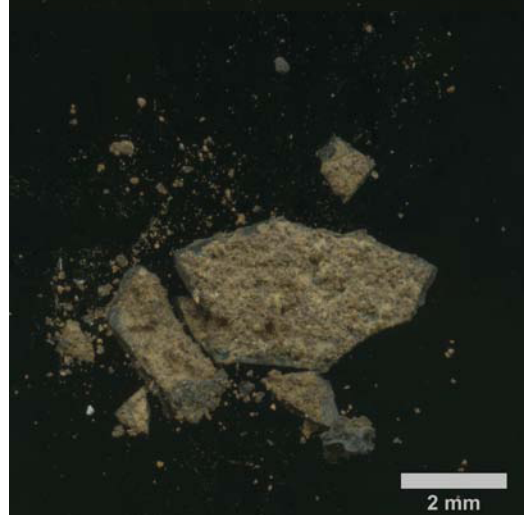
4#



1#b



5#



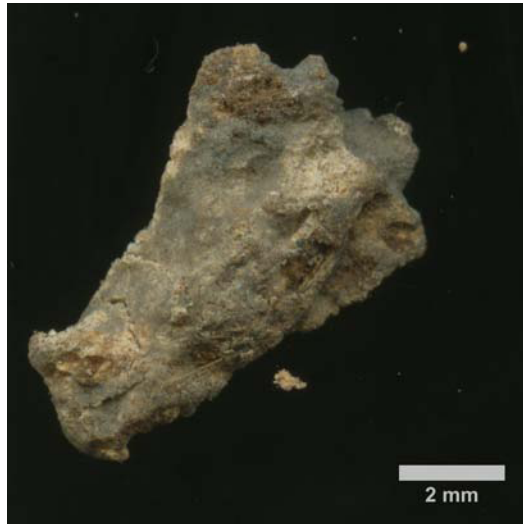
2#



6#



3#



7#

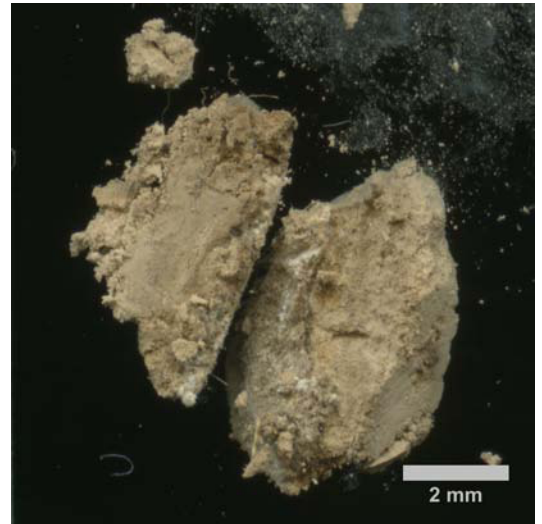


Figure 2S: Light microscopy of deposits from Astana lamps. Ancient materials had yellowish to black color and different density and texture - from soft easily crumbled by pressing with fingers (as 2# and 3#) to hard with sharp edges (as #1b).