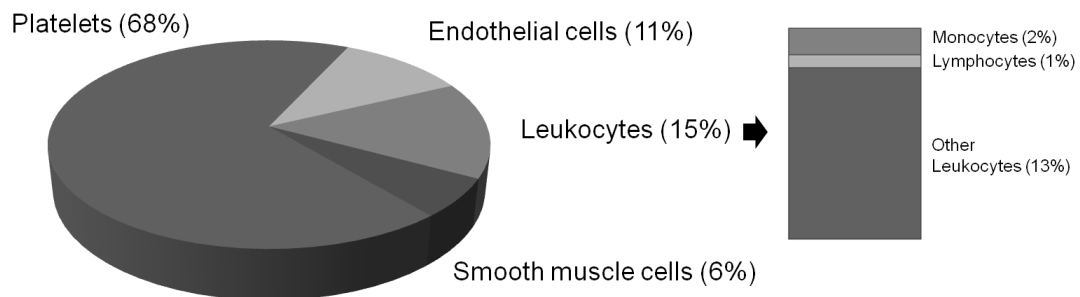
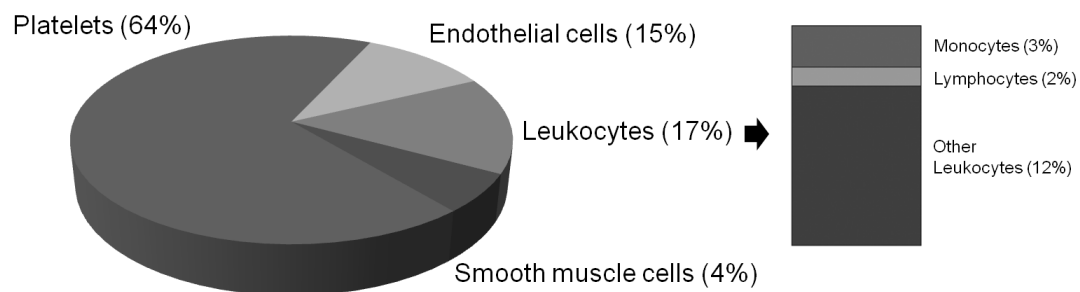


S2 Figure. Cell sources of MP for controls and patients at the onset of stroke.

CONTROLS



PATIENTS



Pie-charts showing distribution of cMPs from controls (n=44) and patients at the onset of stroke (n=44) by major cell origins, indicated by percentages of each marker relative to cell lineage. Used controls were patients at high cardiovascular disease who have never suffered a stroke. Selected markers were CD61 for platelet, CD146 for endothelial cells, CD45 for total leukocytes, CD3 for lymphocyte, CD14 for monocyte and SMA- α for smooth muscle cells origins. Other leukocyte cMPs were positive for CD45 but negative for CD3 or CD14.