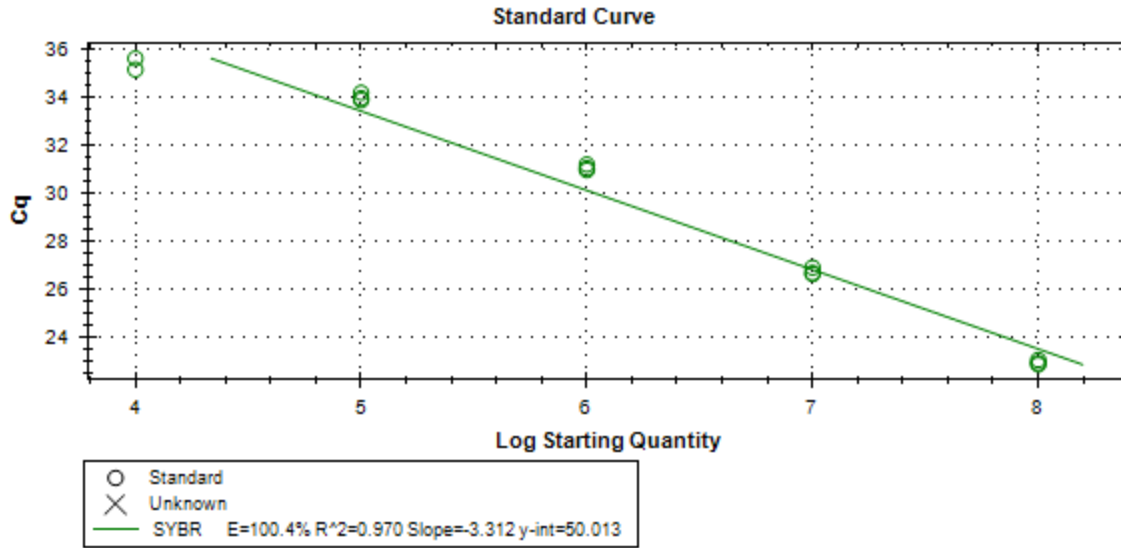
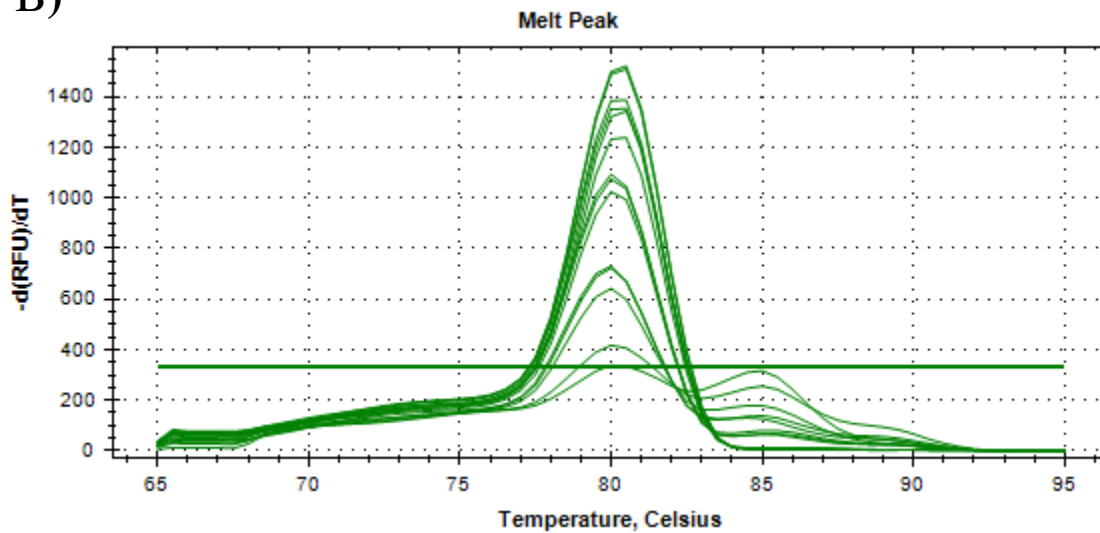


A)



B)



S1 Fig. qPCR standard curve for quantification of *L. casei* 32G in mouse cecum. The standard curves were generated by amplification of DNA isolated from cecum content spiked with 10^8 , 10^7 , 10^6 , 10^5 , or 10^4 CFU/ml of *L. casei* 32G culture, (n:3 for each concentration). A) Standard curve. B) Melting curves.