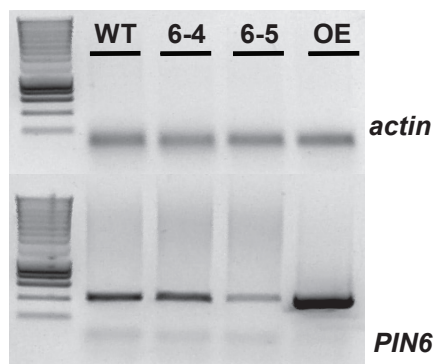
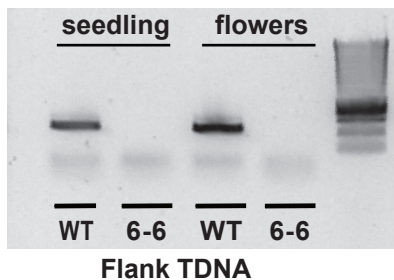


Figure S3

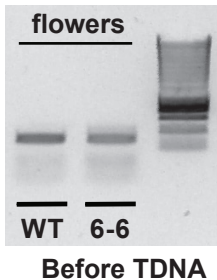
A



B



C



D

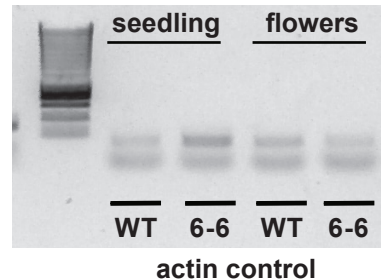


Figure S3. Characterisation of additional *pin6* mutant alleles. A) End-point PCR was used to quantify *PIN6* expression levels in 10 day old seedling tissues from TDNA insertion and overexpression lines. *pin6-5* showed slightly reduced *PIN6* mRNA levels, while OE#1 showed increased *PIN6* transcript levels. B) to D) RT-PCR was used to measure *PIN6* mRNA abundance in *pin6-6* seedling (10 DAG) and/or flowering tissues. PCR amplicons either flanked (B) or positioned before the GK_711C09 TDNA insertion (C). D) ACTIN was used as a control to quantify cDNA.