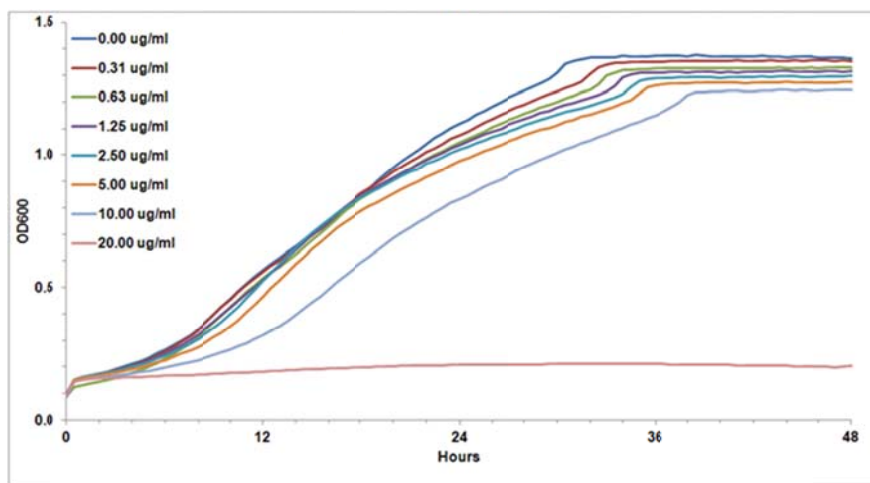
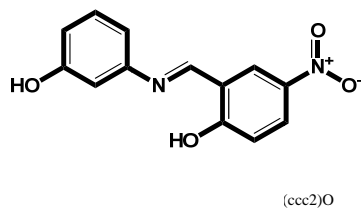
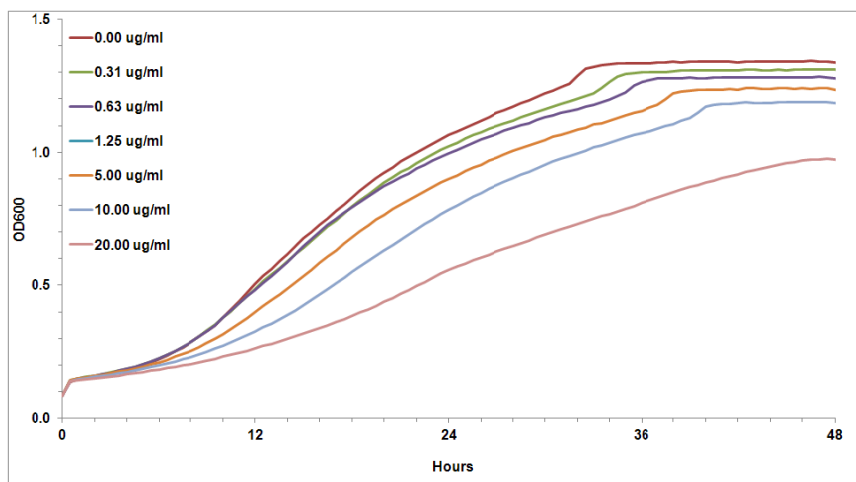
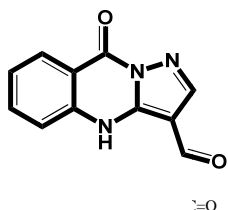
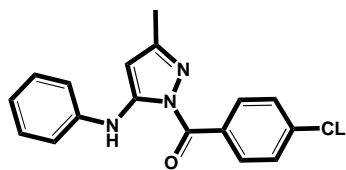


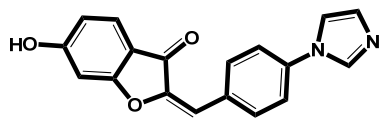
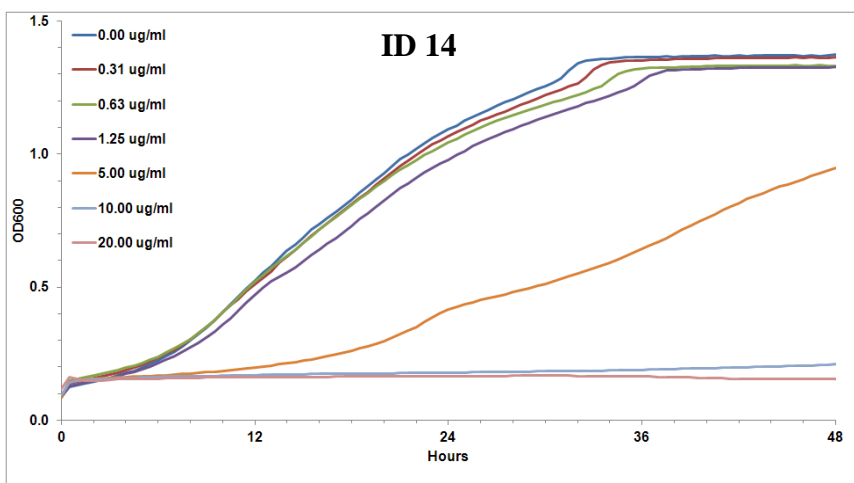
Supplemental Figure F1: Growth curves for the six active compounds.

The compounds that were active in the *Francisella tularensis* subspecies *tularensis* Schu S4 growth assay, as described in the MATERIALS AND METHODS, are shown at the *left* with the corresponding growth curves at the *right*. The compound identifiers (IDs) are cross-referenced to Table 3, and the corresponding SMILES code is listed under each compound. OD₆₀₀, optical density at 600 nm.

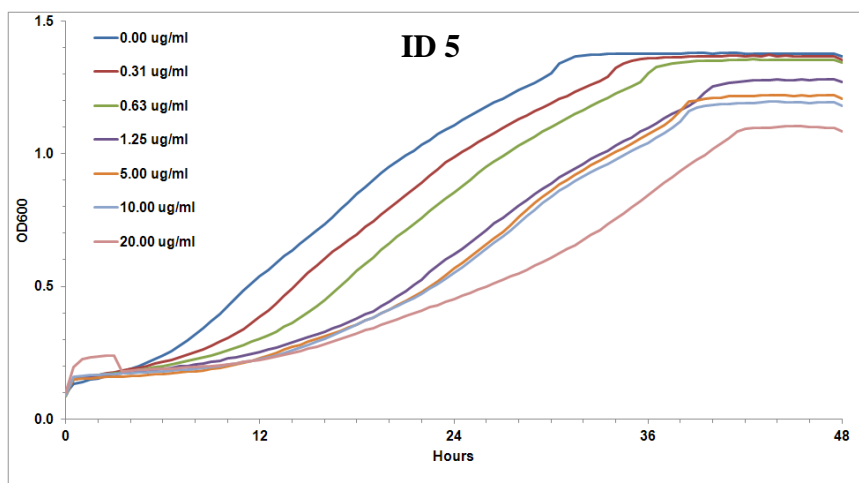


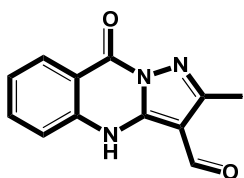


Clc1ccc(cc1)C(=O)[n]2nc(cc2Nc3ccccc3)C

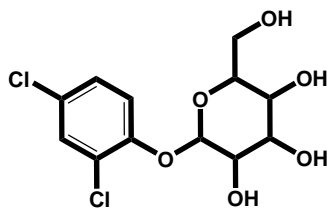
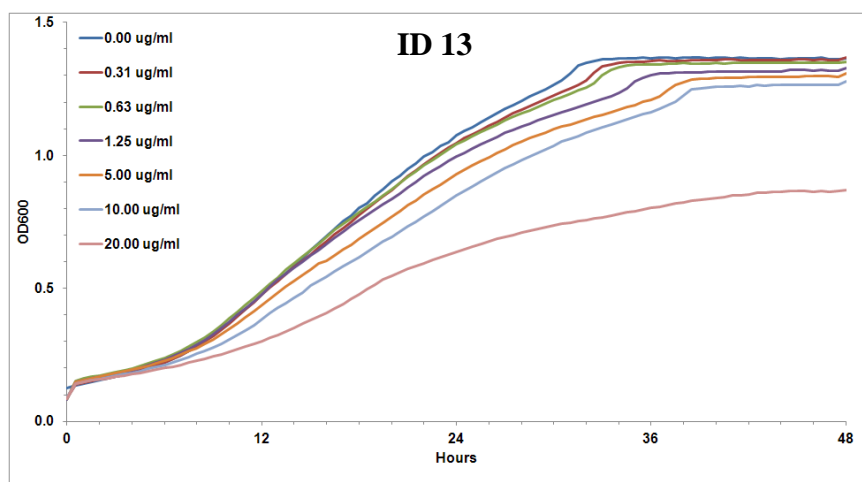


[n]4(cnc4)c1ccc(cc1)(C(=O)Nc2ccc(cc2)O)C2=O





[n]21nc(c(c2Nc3c(cccc3)C1=O)C=O)C



Clc1c(ccc(c1)Cl)OC2OC(C(C(C2O)O)O)CO

