

J14: *Dlx12b*-βg-mCherry

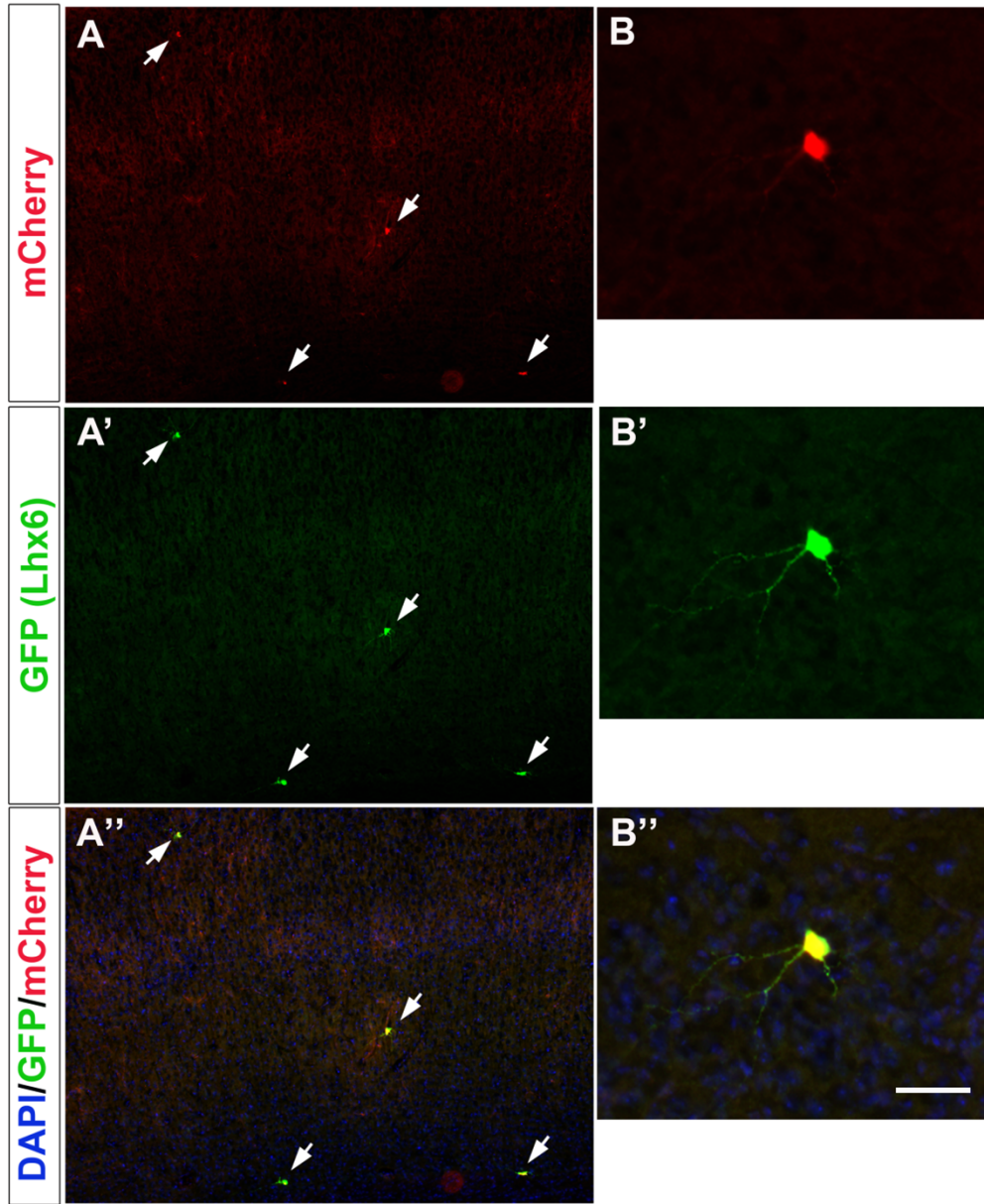


Figure S20: All of the *Dlx12b*-βg-mCherry⁺ cells express Lhx6-GFP thirty-three days after transplantation into the neocortex (white arrows in A-A').
 About 28% of Lhx6-GFP⁺ cells are also *Dlx12b*-mCherry⁺. One of the double positive cells (*Dlx12b*-βg-mCherry⁺, Lhx6-GFP⁺) is shown in B-B'. Scale bar for A-A': 200μm; for B-B': 50 μm.

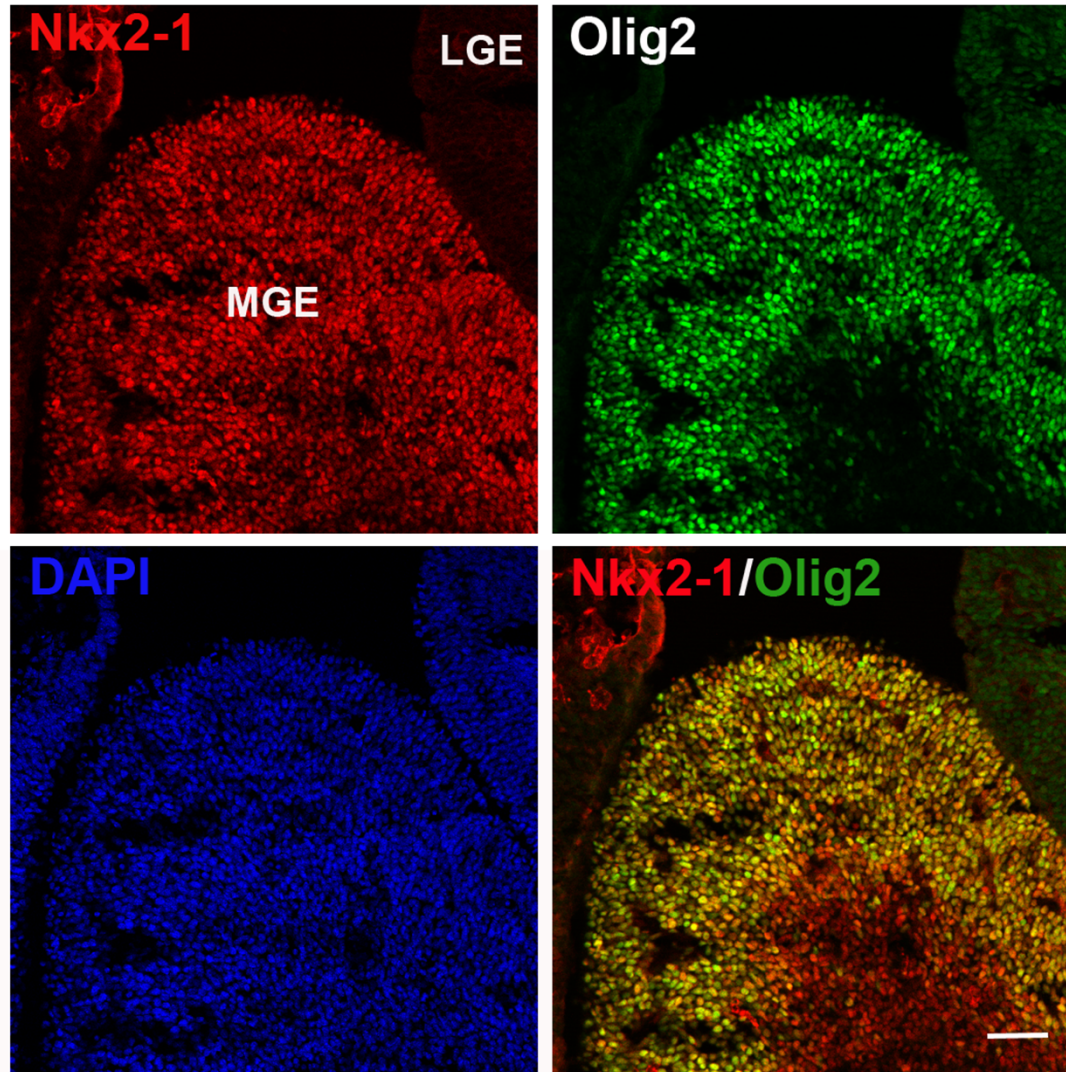


Figure S21: Expression and colocalization of Olig2 and Nkx2-1 in the progenitor zones of the embryonic MGE

E11.5 coronal section through mouse forebrain showing Nkx2-1 (red), Olig2 (green), and DAPI (blue) as visualized by indirect immunofluorescence at the level of the MGE and LGE. At the ventricular zone and subventricular zone of the MGE, all of the cells are labeled by both Nkx2-1 and Olig2 (as shown by double labeling on the lower right panel). The images were taken at a Zeiss Confocal Microscope LSM 510 NLO Meta. Scale bar, 50µm.