

Figure S5

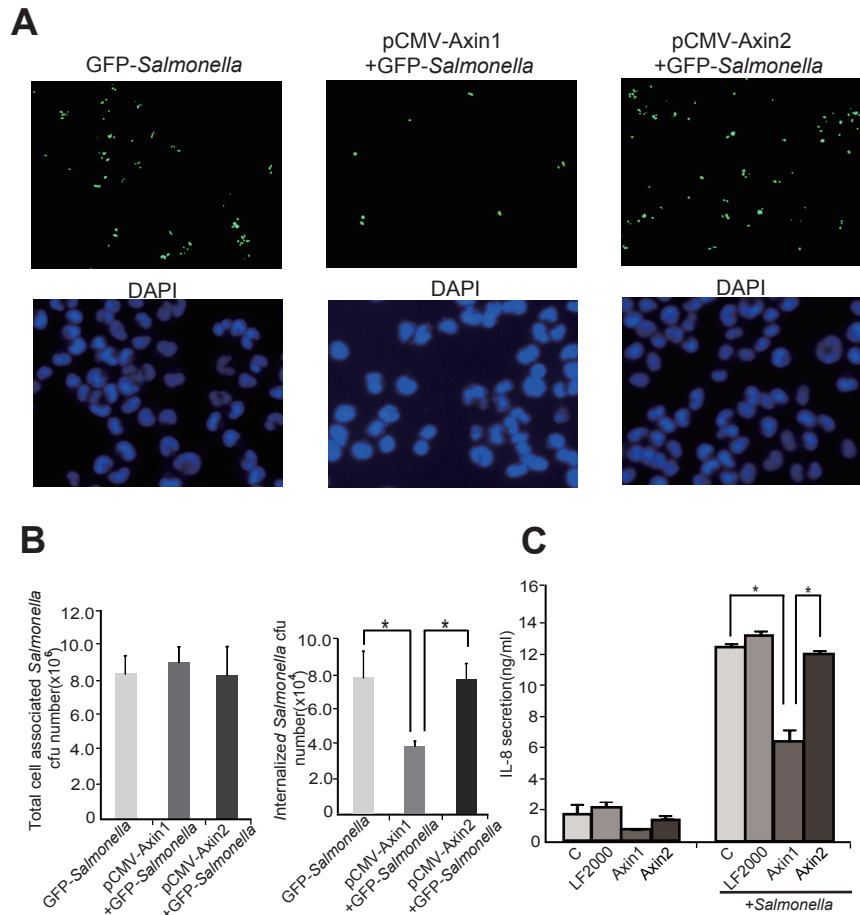


Figure S5. Axin2 expression in the intestinal epithelial cells did not change bacterial infection and inflammatory responses. (A) Cells overexpressing Axin2 had the same number of the GFP-*Salmonella* (Green) as those in the control cells with normal Axin2 level. However, Axin1 overexpression lowered bacterial invasion. (B) Number of bacteria associated with intestinal epithelial cells in Axin1 or 2-overexpressed HCT116 cells after *Salmonella* colonization. (C) IL-8 protein secretion in cell culture media in Axin1 or 2-overexpressing HCT116 cells after *Salmonella* colonization. Data are expressed as mean \pm SD. * $P < 0.05$. $n = 3$ separate experiments.