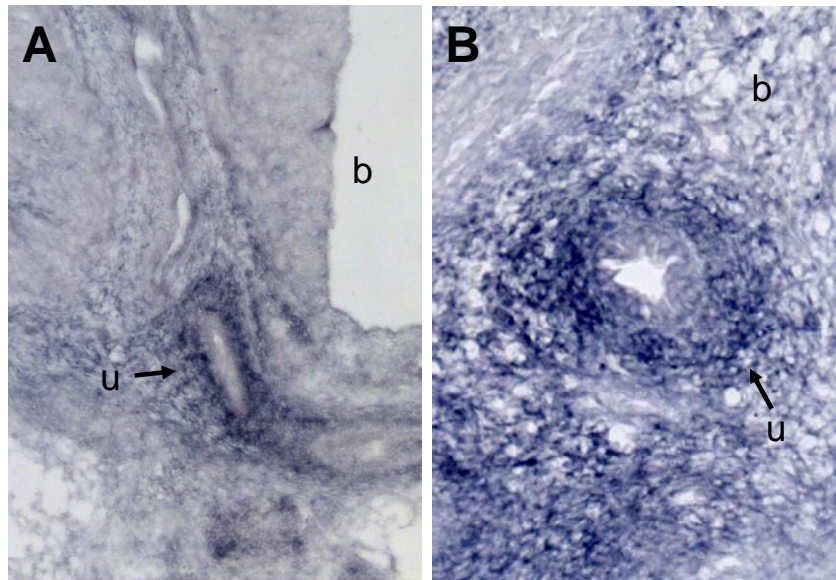


**Figure S7**



**Figure S7.** *Slit2* is expressed in the developing mouse UVJ region. **(A)** *In situ* hybridization analysis shows that *Slit2* is expressed in the distal ureter (u, arrow) inside the bladder (b) wall of an E17.5 mouse embryo. **(B)** Higher magnification of the UVJ region in an E15.5 mouse embryo showing strong *Slit2* expression around the developing distal ureter (u, arrow) inside the bladder (b) wall.