

Figure S6

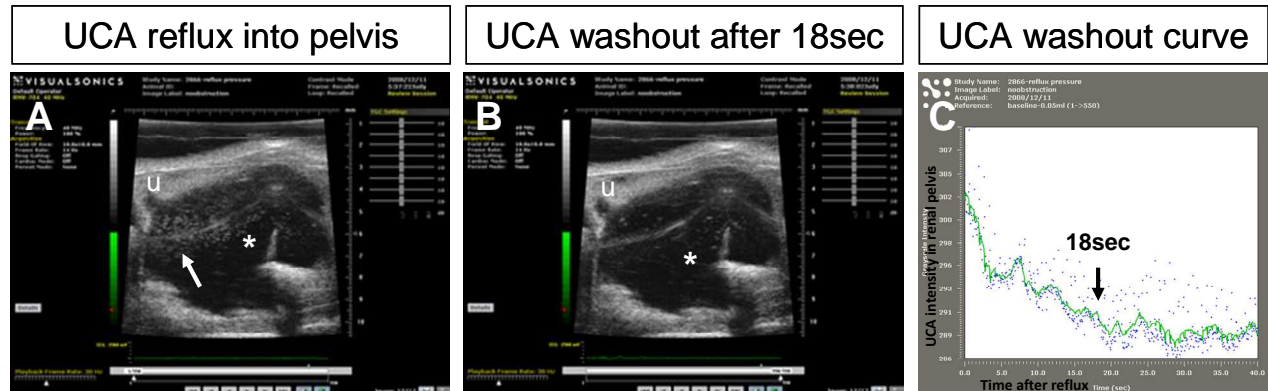


Figure S6. Microbubble ultrasound contrast agents (UCA) were washed out from renal pelvis shortly after reflux in *Robo2* mutant mice. **(A)** Ultrasound contrast agents (UCA, arrow) refluxed into the renal pelvis (asterisk) through the ureter (u) after bladder infusion. **(B)** UCA disappeared from the renal pelvis (asterisk) through the ureter (u) 18 second after reflux, suggesting no urinary tract obstruction. **(C)** UCA washout curve showing microbubble flowed out of the renal pelvis 18 second after it appeared.