

Figure S1

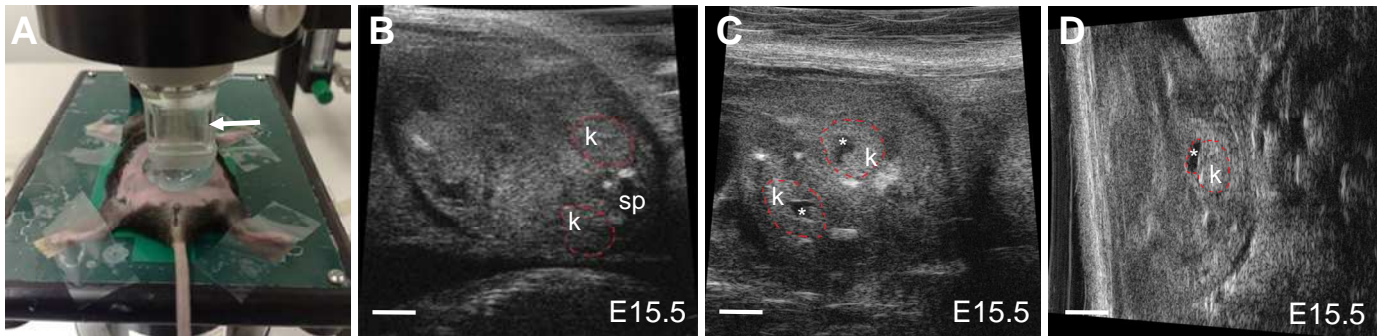


Figure S1. Mouse fetal kidneys were detected by transabdominal ultrasonography at E15.5. **(A)** Ultrasound scanhead position (white arrow) on an E15.5 pregnant female mouse under continuous isoflurane anesthesia. **(B,C)** Ultrasonographic transverse planes depicting normal E15.5 fetal kidney (k); sp, spine; renal pelvis (asterisks in C) was visible in some normal E15.5 fetal kidney. **(D)** An ultrasonographic coronal plane depicting renal pelvic dilatation (asterisk in D) in an E15.5 kidney (k) which was confirmed as duplex kidney at birth. The outline of the kidneys depicted in ultrasound images were marked by red dot line. Scale bars, 1.0 mm.