

**Calcium uptake and proton transport by acidocalcisomes of
Toxoplasma gondii.**

Rohloff et al.

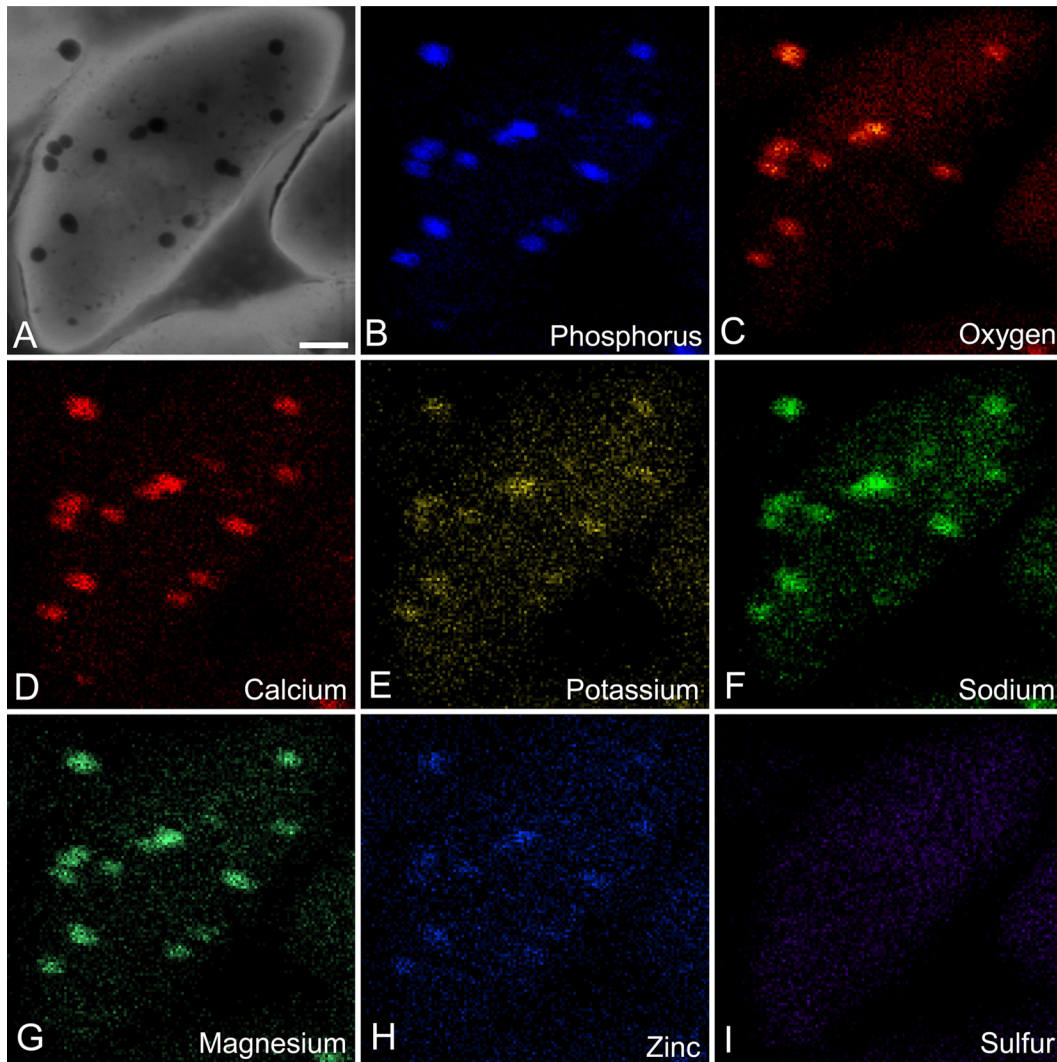


Figure S1. Visualization of acidocalcisomes and spatial mapping of elemental distribution by whole-cell electron microscopy.

Acidocalcisomes are clearly identified as round, electron dense structures seen throughout the cell in A. B-I, specific elements are mapped from the cells identified in A. Scale bar = 0.5 μm .