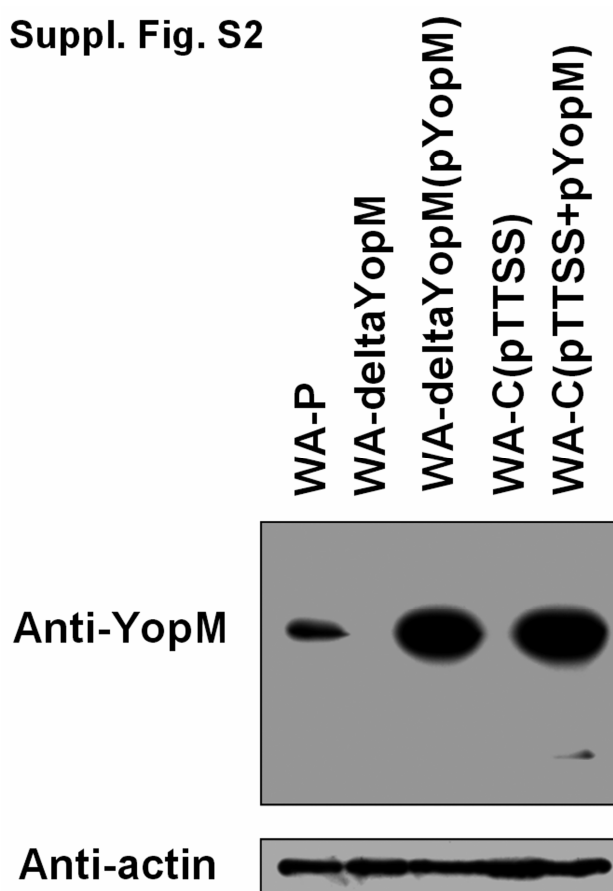


Suppl. Fig. S2



Supplementary Fig. S2: Analysis of YopM quantities translocated into J774.1 cells by different *Yersinia* strains. J774.1 cells were infected with WA-P, WA-deltaYopM, WA-deltaYopM(pYopM), WA-C(pTTSS) and WA-C(pTTSS+YopM) and harvested after 90 min. Cellular lysates were then subjected to western blotting and probed with the indicated antibodies.