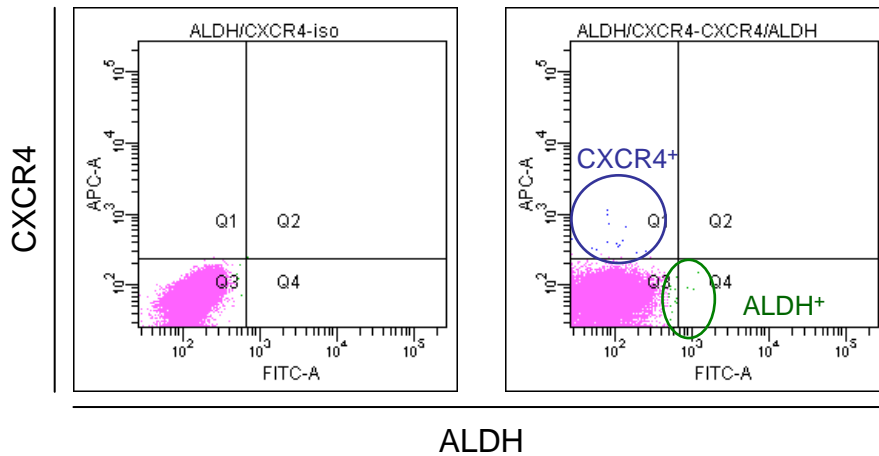
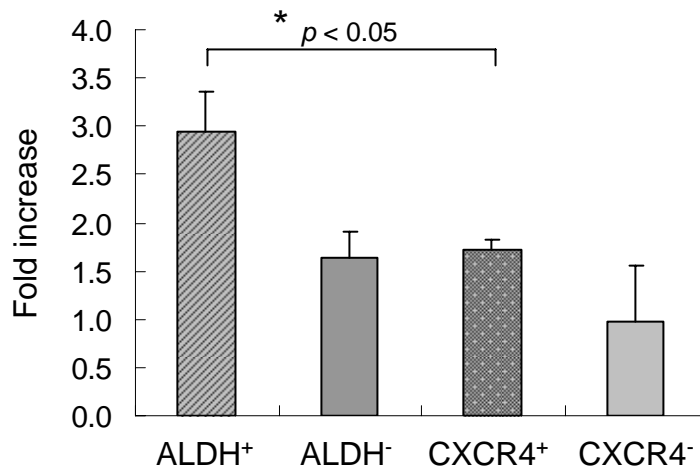


A ALDH<sup>+</sup> and CXCR4<sup>+</sup> ZR-75 cells did not overlap with each other.



B ALDH<sup>+</sup> ZR-75 cells exhibited higher tumorigenicity than CXCR4<sup>+</sup> ZR-75 cells.



C Soft agar colony forming efficiency of ALDH<sup>+</sup> and ALDH<sup>-</sup> HCC1937 cells

