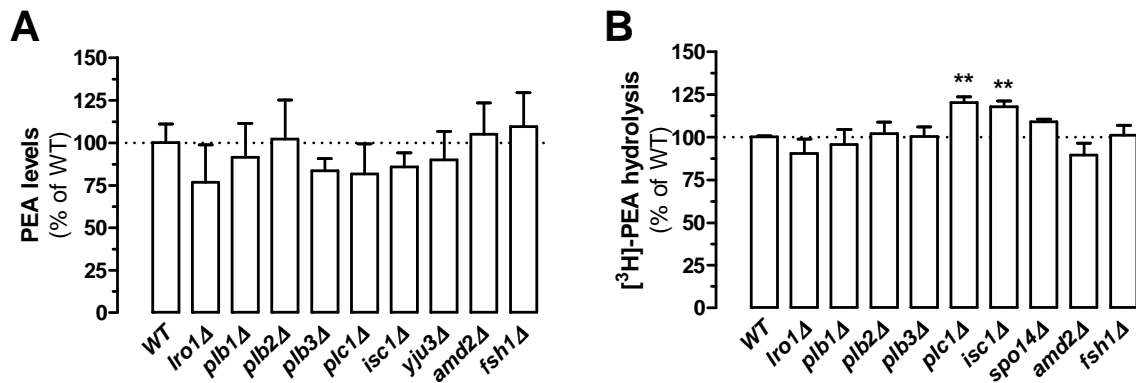


Supplemental Figure 1



Genetic Modification of PEA Production and Inactivation in Yeast

PEA levels were measured by CI-GC-MS (A) and [³H]-PEA hydrolysis (B) in yeast gene deletion strains compared to those found in a wild-type strain (WT). The following gene-deleted strains were assayed: $\Delta iro1$, $\Delta plb1$, $\Delta plb2$, $\Delta plb3$, $\Delta plc1$, $\Delta isc1$, $\Delta spo14$, $\Delta yju3$, $\Delta amd2$ and $\Delta fsh1$ (Table 1). Values are the mean \pm SEM of four to five experiments performed in duplicate (A) and of 3 experiments in duplicate (B), and are expressed as percentage of wild-type yeast. * $P < 0.05$ and ** $P < 0.01$ compared to wild-type yeast (ANOVA one-way, Dunnett's post test).