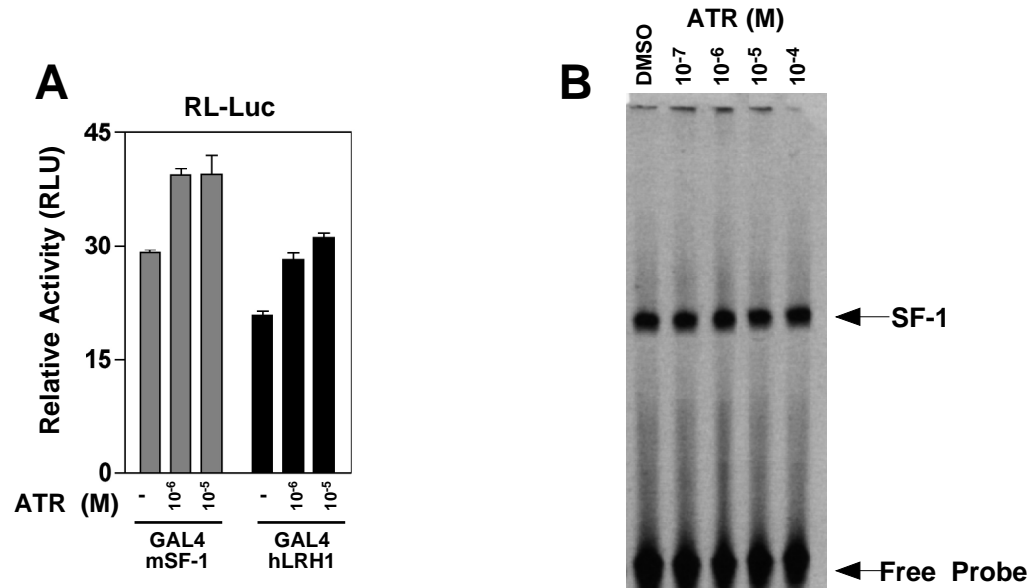


Supplemental Figure 3



A. GAL-4 fused luciferase activity is shown using 200 μ g of GAL-4 reporter, pFR-Luc (Stratagene), as indicated with 100 μ g of mSF-1 (hinge-LBD aa105 to 462) or hLRH-1 (aa198 to 562), with increasing concentrations of ATR added.

B. EMSA assay. For EMSA binding assays, the mMIS SF-1 binding site was used. Sequences are described in Supporting Information. The concentration of ATR is indicated, and was added to binding buffer and then incubated with purified mSF-1 containing the entire DNA binding domain.