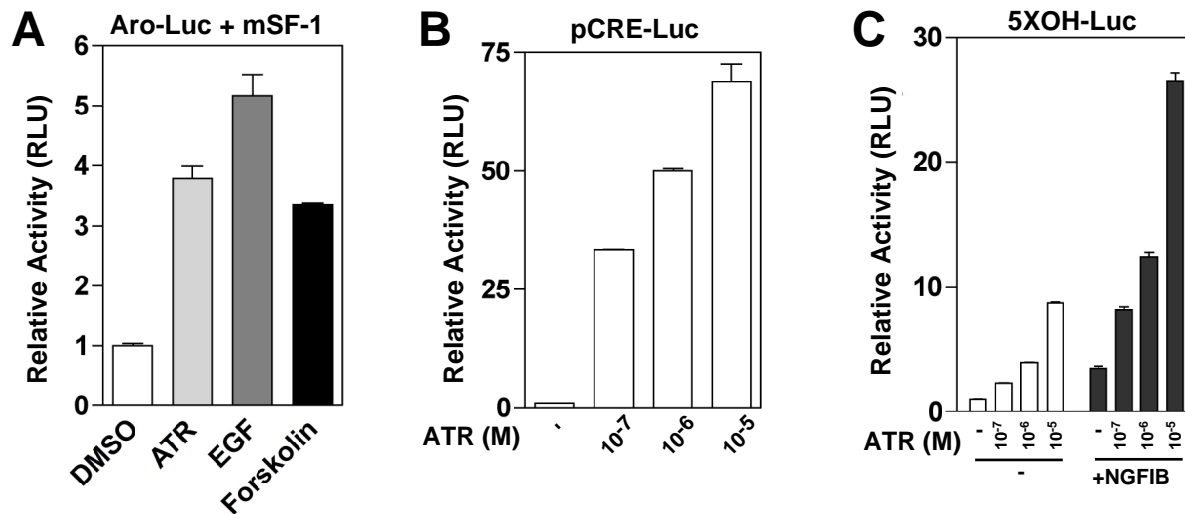


## Supplemental Figure 2



**A.** Luciferase activity in JEG-3 cells following treatment with ATR (10  $\mu$ M), EGF (50  $\mu$ g/L) or Forskolin (10  $\mu$ M) for 24 hrs. All cells were transfected with 25 ng of mSF-1 and 200 ng of Aro-Luc reporter plasmid.

**B.** Luciferase activity for JEG-3 cells transfected with the pCRE-Luc (200 ng, pCRE-Luc, Clontech) and with indicated amount of ATR added for 24 hrs.

**C.** JEG-3 cells were transfected with 5x OH-Luc reporter (200 ng) and NGFIB (10 ng), treated with indicated amount of ATR added for 24 hrs.