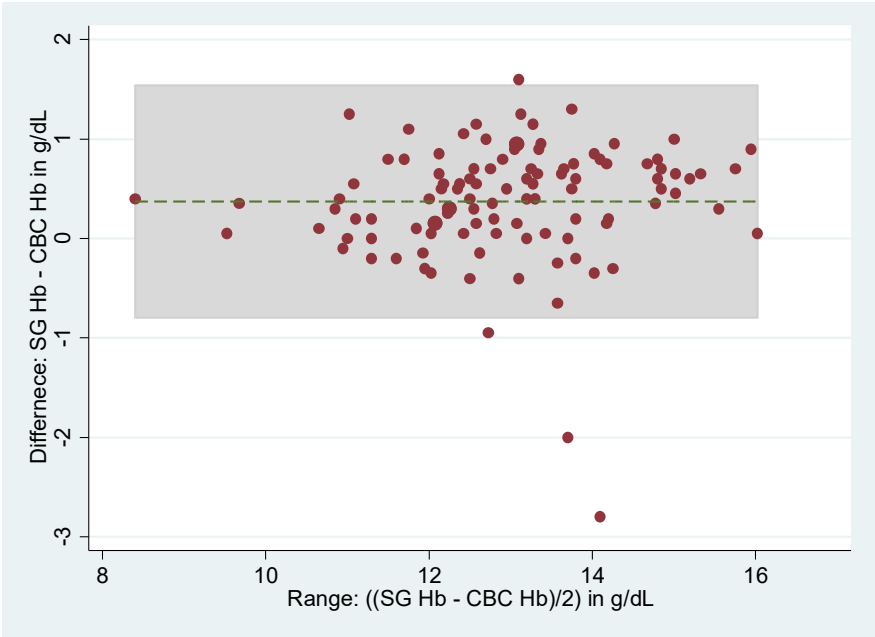
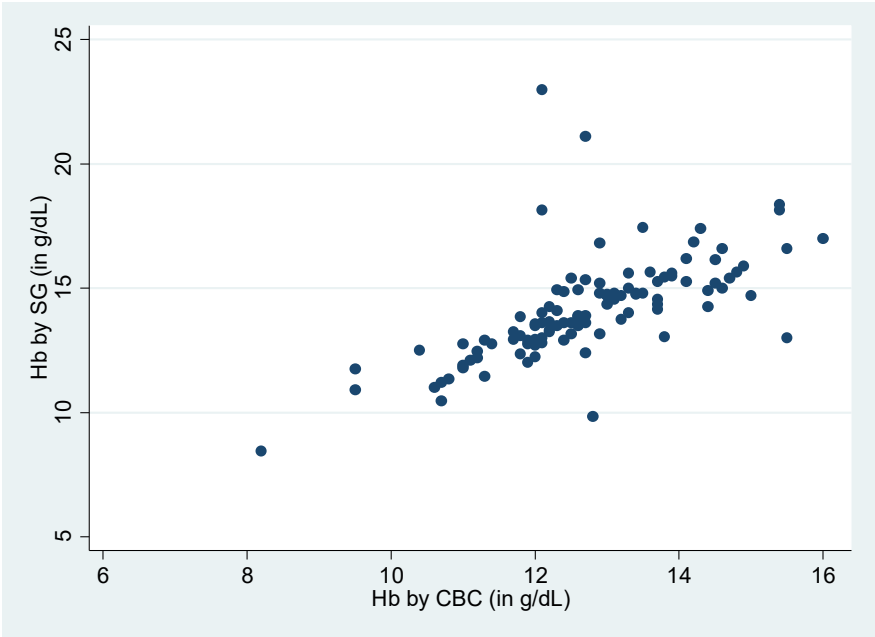


**Supp. Figure 6: Comparison of the SG-Hb in the lab against CBC-HB a) Scatter plot and b) Bland-Altman plot**



*a)  $r_s=0.8892$ ;  $p<0.001$ ,  $n=108$  b) Mean difference: 0.37 g/dL, 95% LoA: -0.80 to 1.54 g/dL (grey shaded area)*