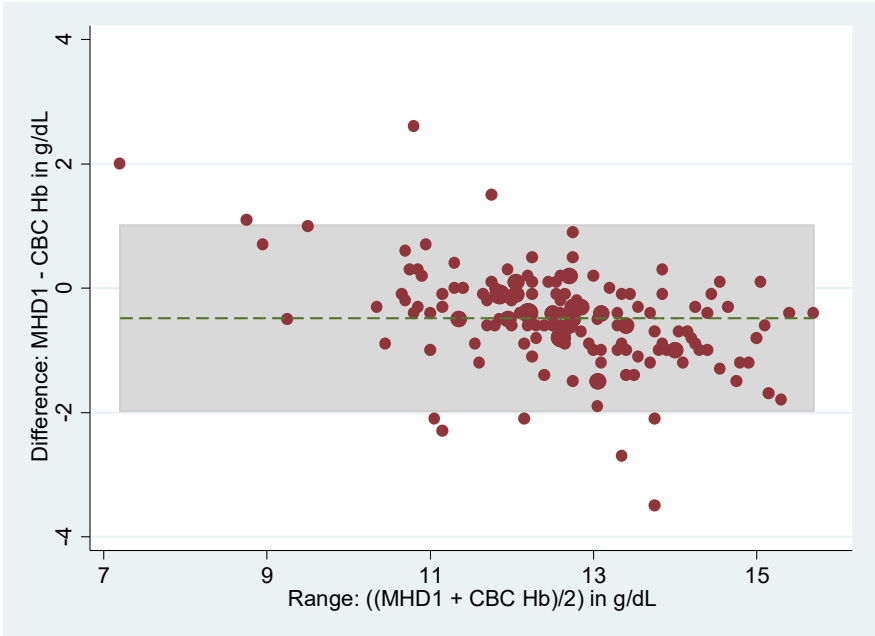
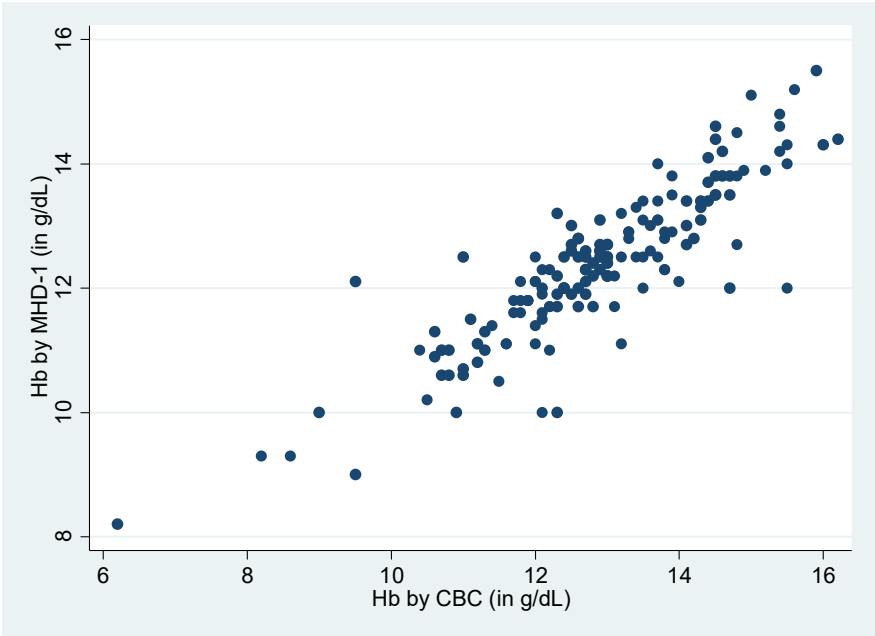


**Supp. Figure 5: Comparison of the MHD-1 in the lab against CBC-Hb a) Scatter plot and b) Bland-Altman plot**



*a)  $r_s=0.8614$ ;  $p<0.001$ ,  $n=158$  b) Mean difference: 0.48 g/dL, 95% LoA: -1.98 to 1.01 g/dL (grey shaded area)*